

This *busstop*[®] station takes in up to eight discrete three-wire inputs per node. Each input automatically detects a sourcing (PNP) or sinking (NPN) open-collector signal. Any combination of NPN and PNP devices may be used.

Each input produces three bits of data- one input state bit, one short-circuit status bit and one open-circuit status bit. The state bit is set when the discrete input device closes. The LED at each input point indicates its status. Each input is monitored for short-circuits and open circuits. Open circuit detection is enabled using a software configuration tool. The status bits automatically reset when the fault is removed.

The node address and communication rate can be set by the rotary switches located under the device cover or through software node commissioning. The unit automatically detects the communication rate.

The FDNL-L0800-C supports explicit messaging, poll, change of state, and cyclic I/O messages. These connections are established through UCMM or predefined master/slave connection set.

FDNL-L0800-C

- Advanced DeviceNet™ Station
- Eight discrete inputs

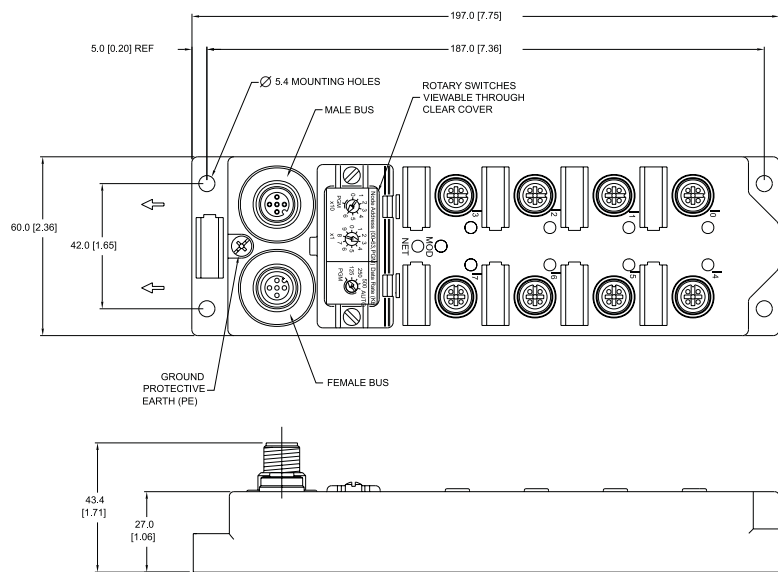
Applications

- For high density applications
- For use with eight three-wire sensors

Features

- PNP/NPN short-circuit protected inputs with open-circuit protection
- Glass filled nylon housing with nickel plated brass connectors
- Rotary Address Switches

Dimensions



Connectors

DeviceNet	Style: 5-Pin eurofast[®] Cordset: Busline use RSC RKC 579- *M Tee : Bus Line use RSC 2RKC 57	<table border="0"> <tr> <td>1 = Shield</td> <td>4</td> <td>3</td> <td>4</td> </tr> <tr> <td>2 = V +</td> <td>1</td> <td>2</td> <td>1</td> </tr> <tr> <td>3 = V -</td> <td>2</td> <td>3</td> <td>2</td> </tr> <tr> <td>4 = CAN_H</td> <td>3</td> <td>4</td> <td>3</td> </tr> <tr> <td>5 = CAN_L</td> <td>4</td> <td>5</td> <td>4</td> </tr> </table> <p>Male Female</p> <p>Through Bus</p>	1 = Shield	4	3	4	2 = V +	1	2	1	3 = V -	2	3	2	4 = CAN_H	3	4	3	5 = CAN_L	4	5	4
1 = Shield	4	3	4																			
2 = V +	1	2	1																			
3 = V -	2	3	2																			
4 = CAN_H	3	4	3																			
5 = CAN_L	4	5	4																			
Type "L"	<table border="0"> <tr> <td>1 = V+</td> <td>3 (-) BU</td> </tr> <tr> <td>2 = N/C</td> <td>4 (r) BK</td> </tr> <tr> <td>3 = V-</td> <td>1 (+) BN</td> </tr> <tr> <td>4 = Input</td> <td></td> </tr> <tr> <td>5 = V +</td> <td></td> </tr> </table> <p>Single Sensor</p>	1 = V+	3 (-) BU	2 = N/C	4 (r) BK	3 = V-	1 (+) BN	4 = Input		5 = V +		<table border="0"> <tr> <td>4 (┘)BK</td> </tr> <tr> <td>1 (+)BU</td> </tr> </table> <p>Mechanical Contact</p>	4 (┘)BK	1 (+)BU								
1 = V+	3 (-) BU																					
2 = N/C	4 (r) BK																					
3 = V-	1 (+) BN																					
4 = Input																						
5 = V +																						
4 (┘)BK																						
1 (+)BU																						

Module Specifications

FDNL-L0800-C Eight NPN/PNP Input, Per Point Diagnostic



Supply Voltage

Bus power	11-26 VDC
Internal current consumption	100 mA plus sum of sensor currents (from bus power)

Input Circuits

(8) PNP or NPN 3-wire sensors or dry contacts

Input voltage (V+)	11-26 VDC (from bus power)
Open circuit current (V+)	< 1mA
Sensor current (V+)	<80 mA per input
Input signal current (Input)	OFF <2mA ON 3.0-3.4 mA at 24VDC
Input delay	2.5 ms

I/O LED Indications

Amber=Open-circuit
Off=Off
Green=On
Red=Short-circuit

Module Status LED

Green: working properly
Flashing green: detecting autobaud rate
Flashing red: I/O short-circuit

Network Status LED

Green: established connection
Flashing Green: ready for connection
Flashing red: connection time-out
Red: connection not possible

Adjustments

via Rotary Switch

Address	0-63
Communication Rate	Auto/125k/250k/500k

Housing

Material	HDPE, nickel plated brass connectors
Enclosure	NEMA 1,3,4,12,13 and IEC IP 67
Operating temperature	-25° to 70°C (-13° to 158°F)

I/O Data Mapping

Item Number/EDS File: F0191/I0191_xx.eds

Product Code: 7/3057 (BF1 hex)

Abbreviations

I = Input Data (0=OFF, 1=ON) O = Output Data (0=OFF, 1=ON)
 ISS = Input Short Status (0=Working, 1=Fault) OS = Output Status (0=Working, 1=Fault)
 IOS = Input Open Status (0=Working, 1=Fault) OGS = Output Group Status (0=Working, 1=Fault)
 IGS = Input Group Status (0=Working, 1=Fault) APS = Aux Power Status (0=OFF, 1=ON)

Input Data	Byte	Bit 7	Bit 6	Bit 5	Bit 4	Bit 3	Bit 2	Bit 1	Bit 0
0		I-7	I-6	I-5	I-4	I-3	I-2	I-1	I-0
1		ISS-7	ISS-6	ISS-5	ISS-4	ISS-3	ISS-2	ISS-1	ISS-0
2		IOS-7	IOS-6	IOS-5	IOS-4	IOS-3	IOS-2	IOS-1	IOS-0