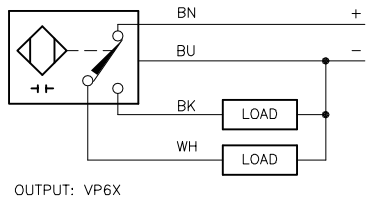
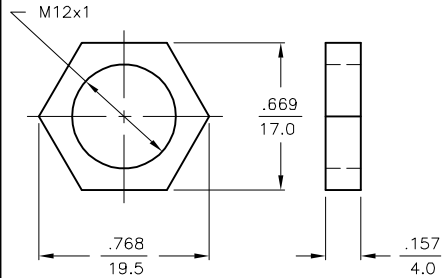


WIRING DIAGRAM



SHORT-CIRCUIT AND OVERLOAD PROTECTED

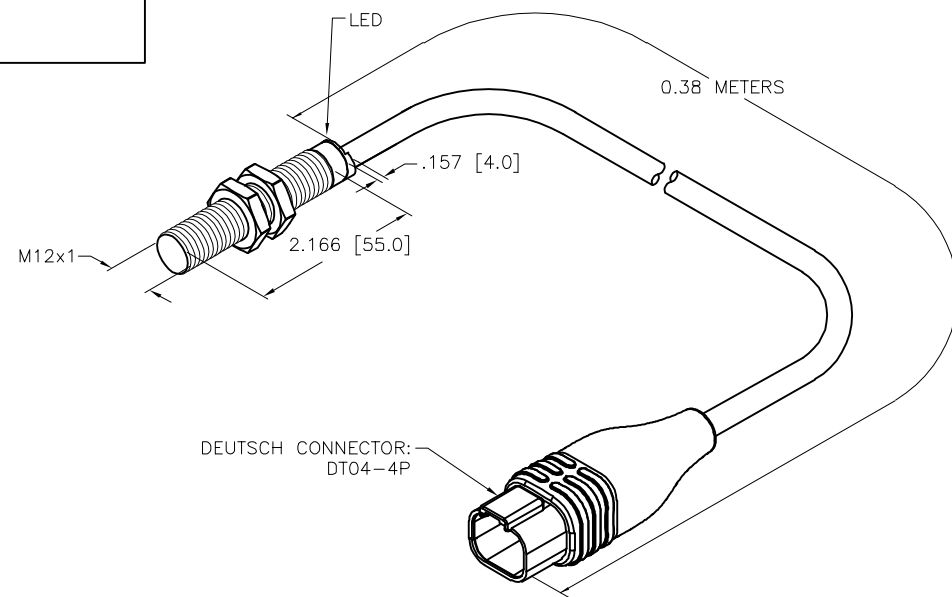
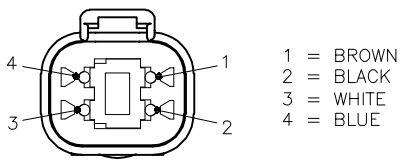
LOCKNUT LN-M12



SPECIFICATIONS

RATED OPERATING DISTANCE	4mm [-.157]
MOUNTING MODE	FLUSH
TEMPERATURE DRIFT	±10% ±15%, ≤ -25°C v ≥ +70°C
HYSTERESIS	3-15%
MIN. REPEAT ACCURACY	≤ 2%
OPERATING TEMPERATURE	-30°C to +85°C (-22°F to +185°F)
RATED OPERATIONAL VOLTAGE	10-30 VDC
RESIDUAL RIPPLE	≤ 10%
DC RATED OPERATIONAL CURRENT	≤ 200 mA
NO-LOAD CURRENT	≤ 15 mA
RESIDUAL CURRENT	≤ 0.1 mA
RATED INSULATION VOLTAGE	≤ 0.5 kV
SHORT-CIRCUIT PROTECTION	YES
MAX. VOLTAGE DROP	≤ 1.8 V
WIRE BREAKAGE PROTECTION	INCORPORATED
REVERSE POLARITY PROTECTION	INCORPORATED
OUTPUT FUNCTION	4-WIRE, COMPLEMENTARY CONTACT, PNP
MAX. SWITCHING FREQUENCY	≤ 3.0 kHz
HOUSING MATERIAL	BRASS, CHROME PLATED
ACTIVE FACE	PLASTIC, LCP
END CAP	PLASTIC, EPTR
CABLE	ø5.2, Lifyy, PVC
VIBRATION RESISTANCE	55 Hz (IN ALL 3 PLANES)
SHOCK RESISTANCE	30 g, 11 ms
DEGREE OF PROTECTION	IP 68
SWITCHING STATUS INDICATION	LED, YELLOW

MALE END VIEW



NOTES:
 DEUTSCH PART NUMBERS:
 CONNECTOR: DT04-4P-CE02
 WEDGE: W4P
 PINS: 0460-202-16141
 PINOUTS:
 1 = BROWN
 2 = BLACK
 3 = WHITE
 4 = BLUE

SOURCE DRAWING - FOR REFERENCE ONLY

RELATED DOCUMENTS 1. 2. 3. 4.	3RD ANGLE PROJECTION	THIS DRAWING IS CONFIDENTIAL AND THE PROPERTY OF TURCK INC. USE OF THIS DOCUMENT WITHOUT WRITTEN PERMISSION IS PROHIBITED.	3000 CAMPUS DRIVE MINNEAPOLIS, MN 55441 1-800-544-7769 (763) 553-7300 (763) 553-0708 fax www.turck.us	
			DRFT RDS DATE 07/15/19 APVD A.F. SCALE 1=2.0	DESCRIPTION BI4U-M12E-VP6X-0.38-DT04-4PM4.36
MATERIAL	ALL DIMENSIONS DISPLAYED ON THIS DRAWING ARE FOR REFERENCE ONLY	UNIT OF MEASUREMENT INCH [MILLIMETER]		IDENTIFICATION NO. 100008858
FINISH		CONTACT TURCK FOR MORE INFORMATION	DO NOT SCALE THIS DRAWING	REV B
B UPDATE MAX. SWITCHING FREQUENCY SPEC	NF 07/25/24	80442	FILE: 100008858	SHEET 1 OF 1
REV DESCRIPTION	BY DATE	ECO NO.		