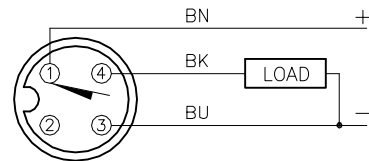


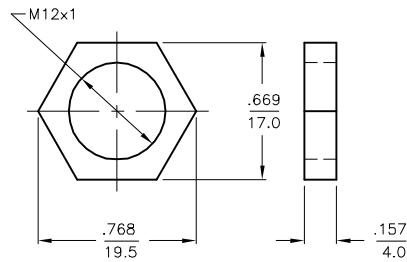
WIRING DIAGRAM



OUTPUT: AP6X

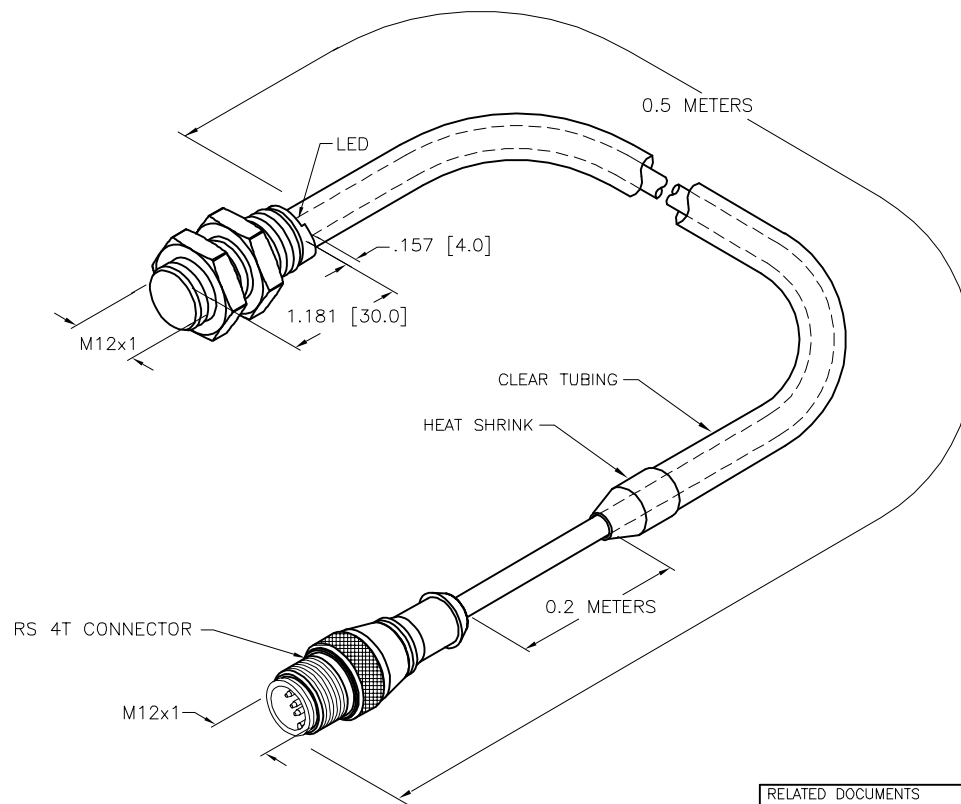
SHORT-CIRCUIT AND OVERLOAD PROTECTED

LOCKNUT LN-MT12



SPECIFICATIONS

RATED OPERATING DISTANCE	4mm = 0.157"
MOUNTING MODE	FLUSH
TEMPERATURE DRIFT	≤ ±10%
HYSTERESIS	1-15%
MIN. REPEAT ACCURACY	≤ 2%
OPERATING TEMPERATURE	-25°C to +70°C (-13°F to +158°F)
RATED OPERATIONAL VOLTAGE	10-30 VDC
RESIDUAL RIPPLE	≤ ±10%
DC RATED OPERATIONAL CURRENT	≤ 100 mA
RESIDUAL CURRENT	≤ 0.6 mA
RATED INSULATION VOLTAGE	≤ 0.5 kV
SHORT-CIRCUIT PROTECTED	YES
MAX. VOLTAGE DROP	≤ 5 V
OUTPUT FUNCTION	3-WIRE, NORMALLY OPEN, PNP
SMALLEST OPERATING CURRENT	≥ 3.0 mA
MAX. SWITCHING FREQUENCY	≤ 1.0 kHz
HOUSING MATERIAL	BRASS/PTFE-COATED
ACTIVE FACE MATERIAL	STONEFACE
CABLE	∅5.3, PVC
SHOCK	30 g, 11 ms
VIBRATION	55 Hz, 1 mm AMPLITUDE (IN ALL 3 PLANES)
DEGREE OF PROTECTION	IP67
SWITCHING STATUS INDICATION	LED: YELLOW



NOTES:

1. "/S1732" DESIGNATES SENSOR WITH SILICONE TUBING OVERTOP THE ACTUAL CABLE JACKET. FOR CABLES WITH CONNECTOR MOLD-ON A MINIMUM OF 0.5M OVERALL CABLE LENGTH REQUIRED FOR MANUFACTURING PURPOSES. ALSO, TUBING MUST BE A MINIMUM OF 200MM SHORTER THAN CABLE LENGTH. HEAT SHRINK WILL BE USED TO SEAL CABLE AT CONNECTOR END.

SOURCE DRAWING - FOR REFERENCE ONLY

RELATED DOCUMENTS	3RD ANGLE PROJECTION	THIS DRAWING IS CONFIDENTIAL AND THE PROPERTY OF TURCK INC. USE OF THIS DOCUMENT WITHOUT WRITTEN PERMISSION IS PROHIBITED.		3000 CAMPUS DRIVE MINNEAPOLIS, MN 55441 1-800-544-7769 (763) 553-7300 (763) 553-0708 fax www.turck.us		
1.		DRFT	NF	DATE	11/12/15	
2.		APVD	A.F.	SCALE	1=1.3	
3.	ALL DIMENSIONS DISPLAYED ON THIS DRAWING ARE FOR REFERENCE ONLY	UNIT OF MEASUREMENT		DESCRIPTION		
4.		INCH [ MILLIMETER ]		BI4-GT12HK-AP6X-0.5-RS4T/S1732		
MATERIAL	SEE NOTES	CONTACT TURCK FOR MORE INFORMATION		IDENTIFICATION NO.	REV	
FINISH	SEE NOTES	DO NOT SCALE THIS DRAWING		46702802	C	
C		UPDATED NOTES		AS	11/15/23	79527
REV		DESCRIPTION		BY	DATE	ECO NO.

