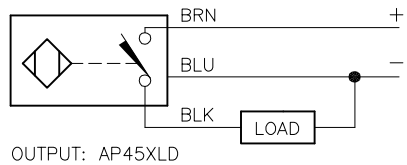
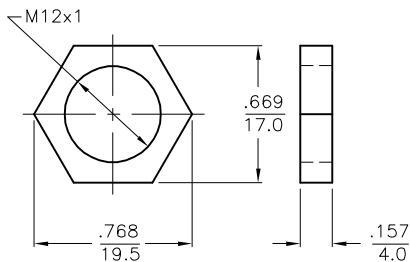


WIRING DIAGRAM

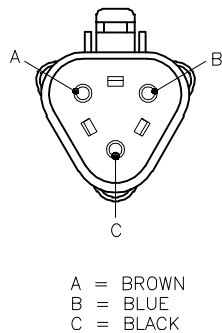


SHORT-CIRCUIT AND OVERLOAD PROTECTED

LOCKNUT LN-M12 (SST)

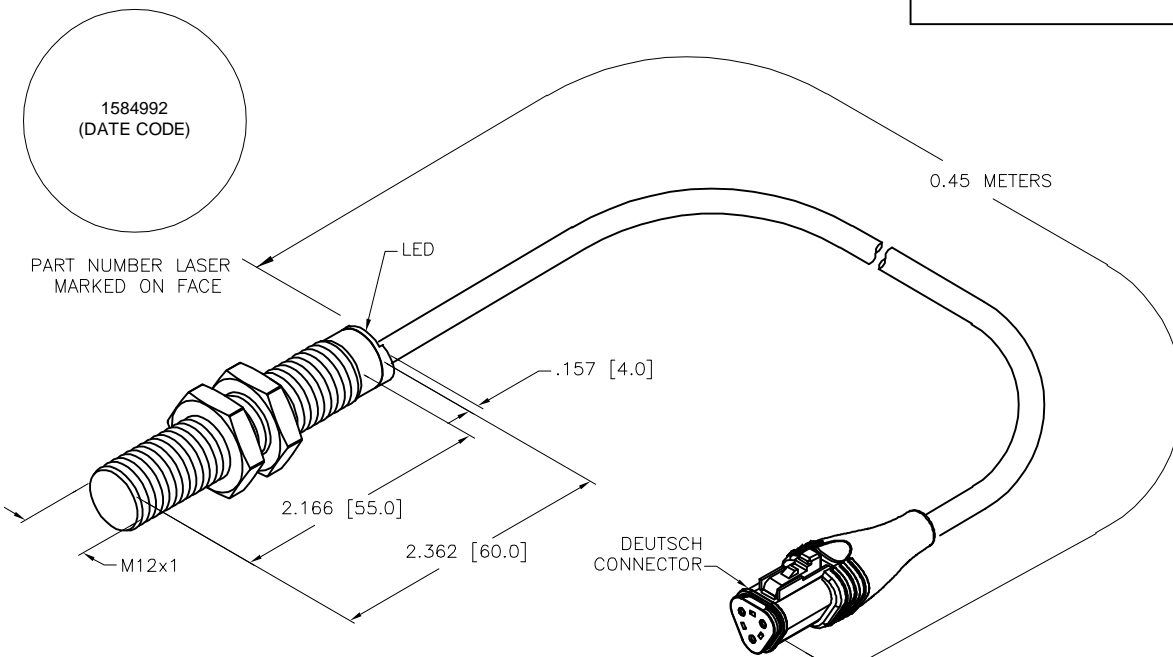


FEMALE END VIEW



SPECIFICATIONS

| | |
|-----------------------------|---------------------------------------|
| RATED OPERATING DISTANCE | 4.0 mm [.157"] |
| MOUNTING MODE | FLUSH |
| TEMPERATURE DRIFT | ≤ ±10% ≤ ±15%, ≤ -25°C V ≥ +70°C |
| HYSTERESIS | 3-15% |
| MIN. REPEAT ACCURACY | ≤ 2% |
| AMBIENT TEMPERATURE | -40°C to +85°C (-40°F to +185°F) |
| OPERATING VOLTAGE | 8.4-65 VDC |
| RESIDUAL RIPPLE | ≤ 10% |
| DC OPERATIONAL CURRENT | ≤ 200 mA |
| NO-LOAD CURRENT | ≤ 15 mA |
| RESIDUAL CURRENT | ≤ 0.1 mA |
| RATED INSULATION VOLTAGE | ≤ 0.5 kV |
| OUTPUT FUNCTION | 3-WIRE, NORMALLY OPEN, PNP |
| SHORT-CIRCUIT PROTECTION | YES |
| MAX. VOLTAGE DROP | ≤ 1.8 V |
| WIRE BREAKAGE PROTECTION | INCORPORATED |
| REVERSE POLARITY PROTECTION | INCORPORATED |
| LOAD DUMP PROTECTION | IV/LEVEL 4, din 40839 (SAE J 1113-11) |
| SWITCHING FREQUENCY | ≤ 2.0 kHz |
| HOUSING MATERIAL | SST, AISI 304 (1.4301) |
| ACTIVE FACE MATERIAL | PLASTIC, PA12-GF30 |
| END CAP MATERIAL | PLASTIC, EPTR |
| CONNECTION | CABLE |
| CABLE | ∅5.2, TPE, 3x20 AWG |
| VIBRATION RESISTANCE | 55 Hz (IN ALL 3 PLANES) |
| SHOCK RESISTANCE | 150 g, 6 ms, (IN ALL 3 PLANES) |
| DEGREE OF PROTECTION | IP68/IP69K |
| SWITCHING STATUS INDICATION | LED/YELLOW |
| NOISE IMMUNITY | 100 V/m RADIATED & 100 mA BCI |



| CABLE LENGTH | TOLERANCE* |
|--------------|---|
| ALL LENGTHS | + 4% (OR 50mm) OF LENGTH - 0% (OR 0mm) OF LENGTH WHICHEVER IS GREATER |
| STRIP LENGTH | TOLERANCE* |
| 0-7mm | ±0.5mm |
| 8-29mm | ±1.0mm |
| 30-49mm | ±2.0mm |
| 50-69mm | ±3.0mm |
| 70-100mm | ±4.0mm |
| OVER 100mm | ±5.0mm |

* UNLESS OTHERWISE SPECIFIED

SOURCE DRAWING - FOR REFERENCE ONLY

NOTES:

DEUTSCH CONNECTOR: DT06-3S-P032
 DEUTSCH WEDGE: W3S
 DEUTSCH PINS: 0462-201-16141

RELATED DOCUMENTS

- 1.
- 2.
- 3.
- 4.

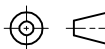
MATERIAL

SEE SPECIFICATIONS

FINISH

SEE SPECIFICATIONS

3RD ANGLE PROJECTION



ALL DIMENSIONS DISPLAYED ON THIS DRAWING ARE FOR REFERENCE ONLY

CONTACT TURCK FOR MORE INFORMATION

THIS DRAWING IS CONFIDENTIAL AND THE PROPERTY OF TURCK INC. USE OF THIS DOCUMENT WITHOUT WRITTEN PERMISSION IS PROHIBITED.

DRFT NF

APVD A.F.

UNIT OF MEASUREMENT
INCH [MILLIMETER]

DO NOT SCALE THIS DRAWING



3000 CAMPUS DRIVE
 MINNEAPOLIS, MN 55441
 1-800-544-7769
 (763) 553-7300
 (763) 553-0708 fax
 www.turck.us

DATE 09/21/16
 SCALE 1=2.2
 DESCRIPTION BI4-EM12E-AP45XLD-0.45-DT06-3SM3

IDENTIFICATION NO. 1584992
 REV E

FILE: 1584992 SHEET 1 OF 1

| | | | | |
|-----|---------------------|----|----------|---------|
| E | UPDATE LASER DETAIL | NF | 09/26/23 | 79296 |
| REV | DESCRIPTION | BY | DATE | ECO NO. |