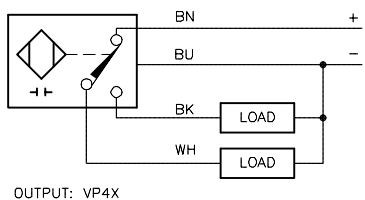
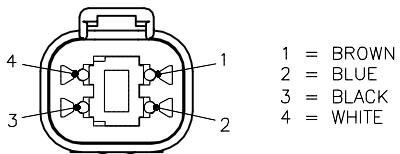


WIRING DIAGRAM

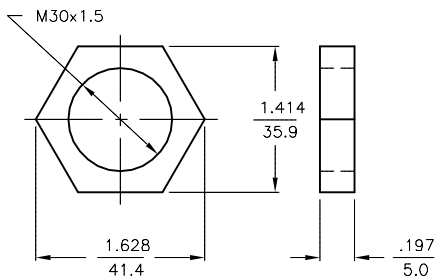


SHORT-CIRCUIT AND OVERLOAD PROTECTED

MALE END VIEW

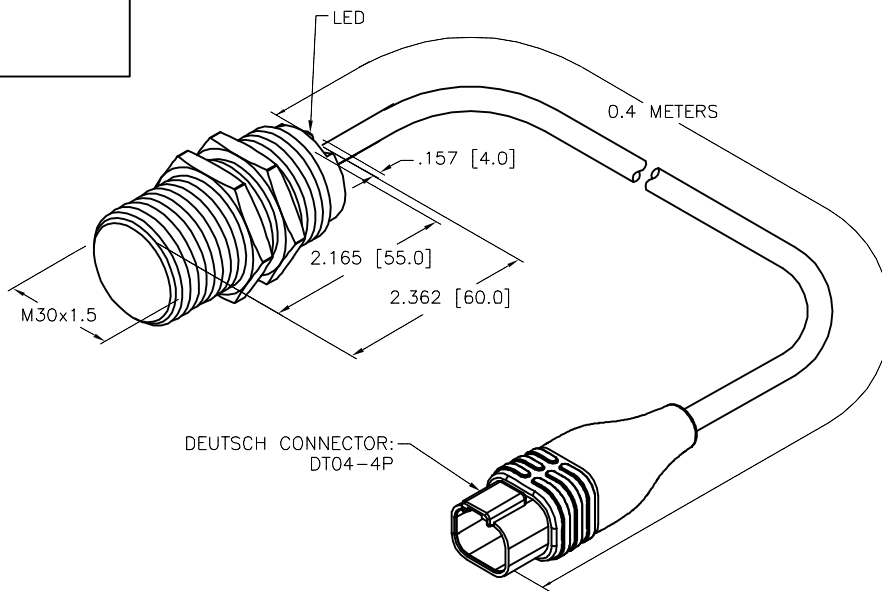


LOCKNUT LN-M30



SPECIFICATIONS

RATED OPERATING DISTANCE	15 mm = .591"
MOUNTING MODE	FLUSH
REPEATABILITY	≤ 2%
TEMPERATURE DRIFT	≤ ± 10%
HYSTERESIS	3-15%
AMBIENT TEMPERATURE	-25°C to +70°C (-13°F to +158°F)
OPERATING VOLTAGE	10-65 VDC
MAX. RIPPLE	≤ 10%
RATED OPERATIONAL CURRENT	≤ 200 mA
NO-LOAD CURRENT	≤ 15 mA
RESIDUAL CURRENT	≤ 0.1 mA
RATED INSULATION VOLTAGE	≤ 0.5 kV
SHORT-CIRCUIT PROTECTION	YES
MAX. VOLTAGE DROP	≤ 1.8 V
WIRE BREAK PROTECTION	INCORPORATED
REVERSE POLARITY PROTECTION	INCORPORATED
OUTPUT FUNCTION	4-WIRE, CHANGE-OVER, PNP
SWITCHING FREQUENCY	≤ 0.3 kHz
HOUSING MATERIAL	CHROME PLATED BRASS
ACTIVE FACE	PLASTIC, PA12-GF20
CABLE	ø5.3, PVC
VIBRATION RESISTANCE	55 Hz (IN ALL 3 PLANES)
SHOCK RESISTANCE	30 g, 11 ms
PROTECTION DEGREE	IP67
SWITCHING STATUS INDICATION	LED; YELLOW



NOTES:

DEUTSCH PART NUMBERS:

CONNECTOR: DT04-4P-CE02
WEDGE: W4P
PINS: 0460-202-16141

PINOUTS:

- 1 = BN
- 2 = BU
- 3 = BK
- 4 = WH

SOURCE DRAWING - FOR REFERENCE ONLY

RELATED DOCUMENTS 1. 2. 3. 4.	3RD ANGLE PROJECTION 	THIS DRAWING IS CONFIDENTIAL AND THE PROPERTY OF TURCK INC. USE OF THIS DOCUMENT WITHOUT WRITTEN PERMISSION IS PROHIBITED.		TURCK 3000 CAMPUS DRIVE MINNEAPOLIS, MN 55441 1-800-544-7769 (763) 553-7300 (763) 553-0708 fax www.turck.us
	MATERIAL	DRFT TV	DATE 08/16/17	
FINISH	ALL DIMENSIONS DISPLAYED ON THIS DRAWING ARE FOR REFERENCE ONLY	APVD A.F.	SCALE 1=2.0	IDENTIFICATION NO. 4570785
	CONTACT TURCK FOR MORE INFORMATION	UNIT OF MEASUREMENT INCH [MILLIMETER]		REV B
B UPDATE DESCRIPTION	RDS 10/06/17 62567	DO NOT SCALE THIS DRAWING		FILE: 4570785
REV DESCRIPTION	BY DATE ECO NO.			SHEET 1 OF 1