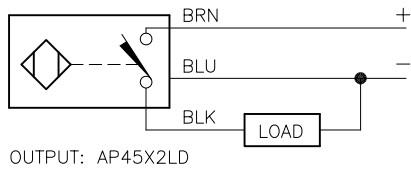
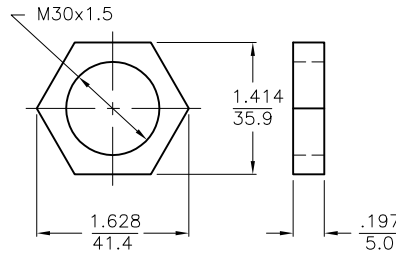


WIRING DIAGRAM



SHORT-CIRCUIT AND OVERLOAD PROTECTED

LOCKNUT LN-EM30



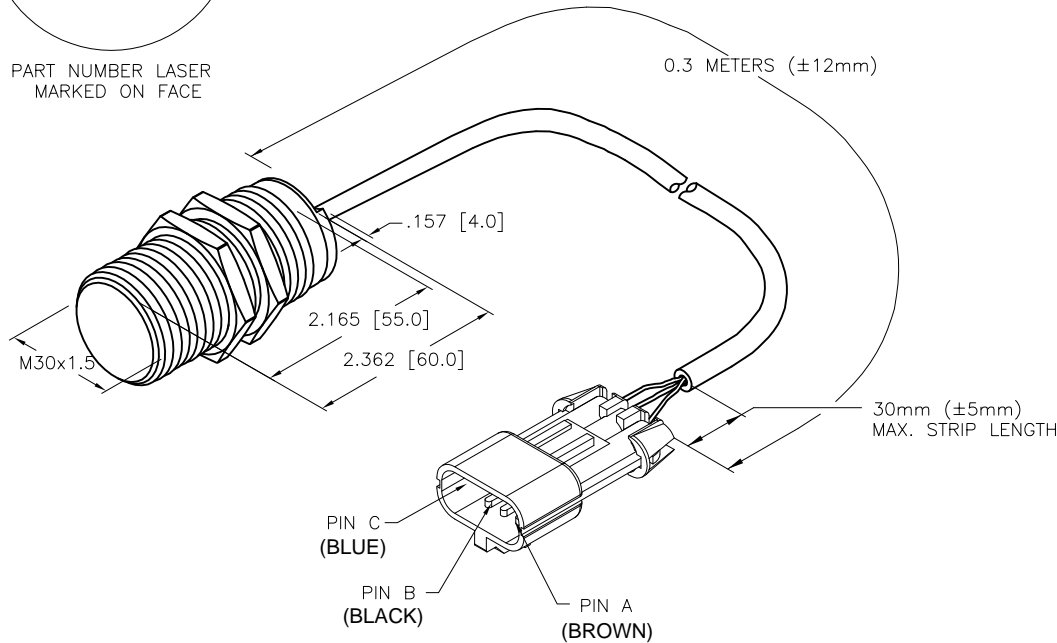
SPECIFICATIONS

RATED OPERATING DISTANCE	15.0 mm [.591"]
MOUNTING MODE	FLUSH
TEMPERATURE DRIFT	≤ ±10% ≤ ±15%, ≤ -25°C V ≥ +70°C
HYSTERESIS	3-15%
MIN. REPEAT ACCURACY	≤ 2%
AMBIENT TEMPERATURE	-40°C to +85°C (-40°F to +185°F)
OPERATING VOLTAGE	8.4-65 VDC
RESIDUAL RIPPLE	≤ 10%
DC OPERATIONAL CURRENT	≤ 200 mA
NO-LOAD CURRENT	≤ 15 mA
RESIDUAL CURRENT	≤ 0.1 mA
RATED INSULATION VOLTAGE	≤ 0.5 kV
OUTPUT FUNCTION	3-WIRE, NORMALLY OPEN, PNP
SHORT-CIRCUIT PROTECTION	YES
MAX. VOLTAGE DROP	≤ 1.8 V
WIRE BREAKAGE PROTECTION	INCORPORATED
REVERSE POLARITY PROTECTION	INCORPORATED
LOAD DUMP PROTECTION	IV/LEVEL 4, din 40839 (SAE J 1113-11)
SWITCHING FREQUENCY	≤ 0.5 kHz
HOUSING MATERIAL	SST, AISI 304 (1.4301)
ACTIVE FACE MATERIAL	PLASTIC, PA12-GF30
END CAP MATERIAL	PLASTIC, EPTR
CONNECTION	CABLE
CABLE	∅5.7, 3x18 AWG, PVC
VIBRATION RESISTANCE	55 Hz (IN ALL 3 PLANES)
SHOCK RESISTANCE	150 g, 6 ms, (IN ALL 3 PLANES)
DEGREE OF PROTECTION	IP68/IP69K (SENSOR ONLY)
SWITCHING STATUS INDICATION	LED/YELLOW
NOISE IMMUNITY	100 V/m RADIATED & 100 mA BCI

T1584065
BI15-EM30-AP45XLD/S1613
(DATE CODE)

PART NUMBER LASER
MARKED ON FACE

0.3 METERS (±12mm)



SOURCE DRAWING - FOR REFERENCE ONLY

NOTES:

1. "/S1613" DESIGNATES SENSOR WIRED TO PACKARD CONNECTOR.

CABLE - 18AWG, 3 CONDUCTOR, GREY, PVC.

CONNECTOR - PACKARD ELECTRIC
MALE CONNECTOR P/N 15300003
- SECONDARY LOCK P/N 15300015
- TERMINAL P/N 12048159
- SEAL P/N 12010293

RELATED DOCUMENTS 1. 2. 3. 4.	3RD ANGLE PROJECTION	THIS DRAWING IS CONFIDENTIAL AND THE PROPERTY OF TURCK INC. USE OF THIS DOCUMENT WITHOUT WRITTEN PERMISSION IS PROHIBITED.	3000 CAMPUS DRIVE MINNEAPOLIS, MN 55441 1-800-544-7769 (763) 553-7300 (763) 553-0708 fax www.turck.us	
			TURCK	
MATERIAL	SEE SPECIFICATIONS	DRFT RDS	DATE 12/06/10	DESCRIPTION
FINISH	SEE SPECIFICATIONS	APVD	SCALE 1=2.0	BI15-EM30-AP45XLD/S1613
		UNIT OF MEASUREMENT		IDENTIFICATION NO.
		INCH [MILLIMETER]		1584065
		CONTACT TURCK FOR MORE INFORMATION		REV D
		DO NOT SCALE THIS DRAWING		FILE: 1584065
				SHEET 1 OF 1

D	UPDATE ID NUMBER PER HARMONIZATION PROJECT	CBM	11/06/17	
REV	DESCRIPTION	BY	DATE	ECO NO.