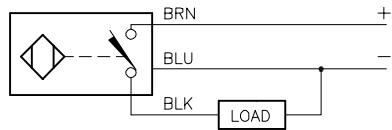


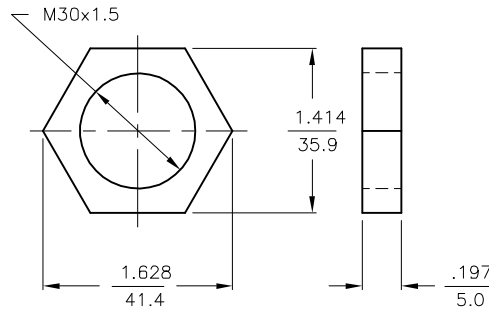
WIRING DIAGRAMS



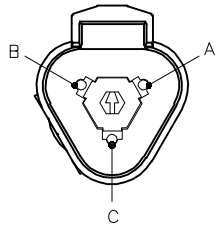
OUTPUT: AP6X

SHORT-CIRCUIT AND OVERLOAD PROTECTED

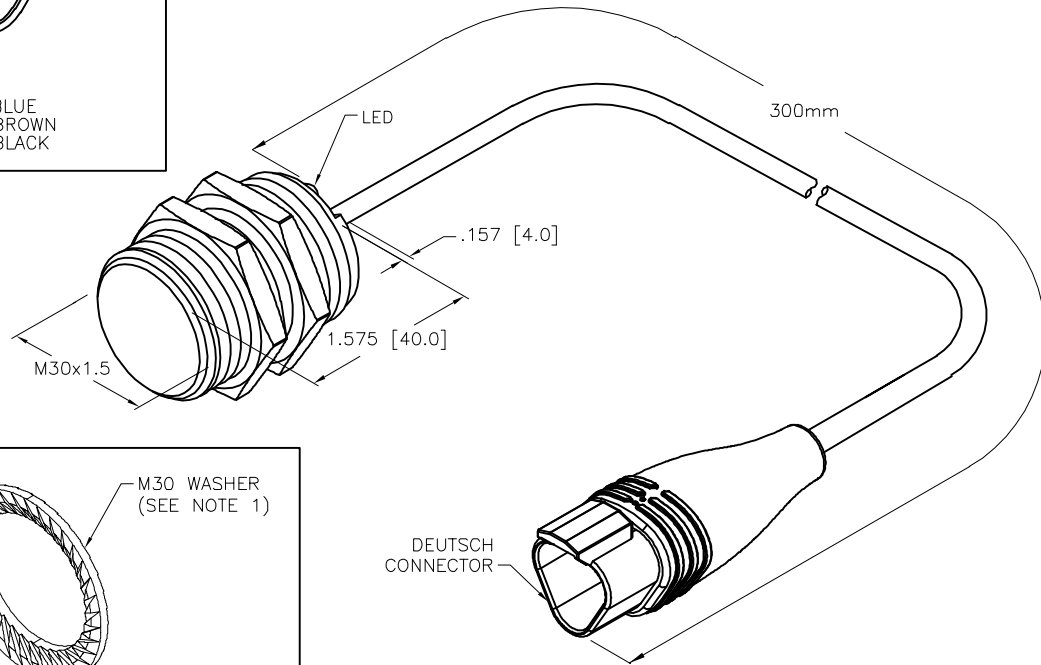
LOCKNUT LN-M30



MALE END VIEW



A = BLUE
B = BROWN
C = BLACK



SPECIFICATIONS

RATED OPERATING DISTANCE	10mm = .394"
MOUNTING MODE	FLUSH
MIN. REPEAT ACCURACY	≤ 2%
TEMPERATURE DRIFT	≤ ±10% ≤ ±15%, ≤ -25°C v ≥ +70°C
HYSTERESIS	3-15%
OPERATING TEMPERATURE	-25°C to +70°C (-13°F to +158°F)
RATED OPERATIONAL VOLTAGE	10-30 VDC
RESIDUAL RIPPLE	≤ 10%
DC RATED OPERATIONAL CURRENT	≤ 200 mA
NO-LOAD CURRENT	≤ 15 mA
RESIDUAL CURRENT	≤ 0.1 mA
RATED INSULATION VOLTAGE	≤ 0.5 kV
SHORT-CIRCUIT PROTECTION	YES
MAX. VOLTAGE DROP	≤ 1.8 V
WIRE BREAKAGE PROTECTION	INCORPORATED
REVERSE POLARITY PROTECTION	INCORPORATED
OUTPUT FUNCTION	3-WIRE, NORMALLY OPEN, PNP
MAX. SWITCHING FREQUENCY	≤ 0.5 kHz
HOUSING MATERIAL	METAL, BRASS/CHROME-PLATED
ACTIVE FACE MATERIAL	PLASTIC, LCP-GF30
END CAP MATERIAL	PLASTIC, EPTR
CABLE	∅5.3, PVC
VIBRATION RESISTANCE	55 Hz, 1 mm AMPLITUDE (IN ALL 3 PLANES)
SHOCK RESISTANCE	30 g, 11 ms
DEGREE OF PROTECTION	IP67
SWITCHING STATUS INDICATION	LED, YELLOW

NOTES:

1. DEUTSCH PARTS USED:

CONNECTOR: DT04-3P-CE02 (302830)
WEDGE: W3P (303455)
PINS: 0460-202-16141 (302835)

2. "/S1760" DESIGNATES STANDARD SENSOR W/2x LOCKWASHERS ADDED TO BAG.
LOCKWASHER, METAL, SERRATED COMP

SOURCE DRAWING - FOR REFERENCE ONLY

RELATED DOCUMENTS 1. 2. 3. 4.	3RD ANGLE PROJECTION 	THIS DRAWING IS CONFIDENTIAL AND THE PROPERTY OF TURCK INC. USE OF THIS DOCUMENT WITHOUT WRITTEN PERMISSION IS PROHIBITED.		3000 CAMPUS DRIVE MINNEAPOLIS, MN 55441 1-800-544-7769 (763) 553-7300 (763) 553-0708 fax www.turck.us	
	MATERIAL	ALL DIMENSIONS DISPLAYED ON THIS DRAWING ARE FOR REFERENCE ONLY	DRFT TV DATE 10/13/16	DESCRIPTION BI10-G30K-AP6X-0.3-DT04-3PM3.23/S1760	
FINISH	CONTACT TURCK FOR MORE INFORMATION	APVD A.F. SCALE 1=1.5	UNIT OF MEASUREMENT INCH [MILLIMETER]		IDENTIFICATION NO. 4414750
REV ADD WASHER	NF 06/22/21 500000003109	DO NOT SCALE THIS DRAWING		REV B	
REV DESCRIPTION	BY DATE ECO NO.	FILE: 4414750		SHEET 1 OF 1	